

## 2001 MITSUBISHI LANCER GSR EVOLUTION 7 4WD (SAMPLE)

Report generated on 2020-02-20

### VEHICLE DETAILS

Data Source	
Reported date	
Lot number	
Chassis ID	CT9A-XXXXXX
Make	MINIBUS
Model	LANCER
Mileage	
Engine CC	2000
Year	2001
Grade	GSR EVOLUTION 7 4WD
Inspection	2020.08
Equipment	AAC
Transmission	F5
Start price	¥290,000
Finish price	
Color	BLACK
Condition	3.5
Status	Sold

**GRADE 3.5** **AUTOCHECK GRADING**  
Average condition

The Autocheck grading scheme is based on standard Japanese auction grading system. It lets you compare similar vehicles with ease.



#### Auction grade

3.5 Average condition



#### Accident / Repair

No Problem found



#### Mileage report

Fair mileage



#### Use history

Private Car



#### Stolen check

No stolen status



### AUTOCHECK FACTS

#### Auction grade



Average condition - With normal wear & tear  
Numerous condition faults / possible minor repair

#### Vehicle use



Vehicle use as a private car

**NOTE:** This Autocheck Vehicle History Report is based only on Information supplied to Autocheck CO. and available as of 2020-02-20 14:52:15. Other information about this vehicle, including problems, may not have been reported to Autocheck CO. Use this report as one important tool, along with a vehicle inspection and test drive, to make a better decision about your next Japanese used car.

## ✓ HISTORY RECORDS ( JAPAN )

Type of record	Reported event	Reported date	Source	Details	Airbag
Accident/Repair	✓ Not reported				
Malfunction	✓ Not reported				
Theft	✓ Not reported				
Fire damage	✓ Not reported				
Water damage	✓ Not reported				
Hail damage	✓ Not reported				

## REPORTED ODOMETER HISTORY

Reported date	Kilometres	Source

## ✓ USE HISTORY ( JAPAN )

Use in the contaminated regions <sup>4</sup>	Radioactive contamination test fail <sup>5</sup>	Commercial use
Not reported	Not reported	Not reported

## MANUFACTURE RECALL HISTORY

Date	Source	Affected part	Details
No records found.			

# CONDITION SHEET & PHOTOS

出品番号	初度登録	車名	ドア形状	グレード	評価点
	H13 年	ランサー	4SD	GSRエボリューション7 4WD	3.5
	2月	車歴 自家用	排気量 2000cc	燃料 ガソリン	型式 GH-CT9A
					外装 D
					内装 C
走行	車検	登録番号	名変期限	セールスポイント	
km	32年08月	大阪 352x1225	月 日	★社外アドバン17AW ★フロアマット ★レカロシート ★ETC	
シフト	エアコン	外装色	乗車定員	最大積載量	
F5	AAC	ブラック	5人	kg	
		カラーNo.	内装色	輸入車	リサイクル預託金
		X42		系	12,470円
後日発送部品					純正装備
					I7B PS PW
注意事項欄					車台番号
					諸元
					長さ 445 幅 177 高さ 145
検査員記入欄					
左右Rサイドメンバー先シワ 室内汚れ シフトノブすれ ハンドルすれ Rスポイラー色あせ エンドパネルU2 サイドミラー色あせ 下廻りS 外装小傷有り 追加メーター取付					
事務局よりご案内					

A:転写 U:欠陥 B:転写を伴う欠陥 P:要塗装 W:補修跡 S:錆 C:腐食、穴 G:700材52点転写 XX:交換済み X:要交換 欠:欠品 内・外装評価 5段階効力順(A・B・C・D・E) 1

Please proceed to the next page to see English Translation of this auction sheet.

# CONDITION SHEET ENGLISH TRANSLATION

Auction No.	Vehicle Use		Displacement	Grade	Grade	
	Private		2000cc	GSR EVOLUTION 7 4WD	<b>3.5</b>	
	Japan Y/M	Make/model	Model code	Door Style	Exterior	Interior
	2001-02	Lancer	GH-CT9A	4SD	<b>D</b>	<b>C</b>

Current Inspection (Year/month)		
32/08		
Mileage in Kms		
[REDACTED]		
original color	change color	color no:
BLACK		X42
Fuel		Interior color
GS (Gasoline)		N/A
Seats	Drive type	Drive
5	2WD	RHD
Notice		

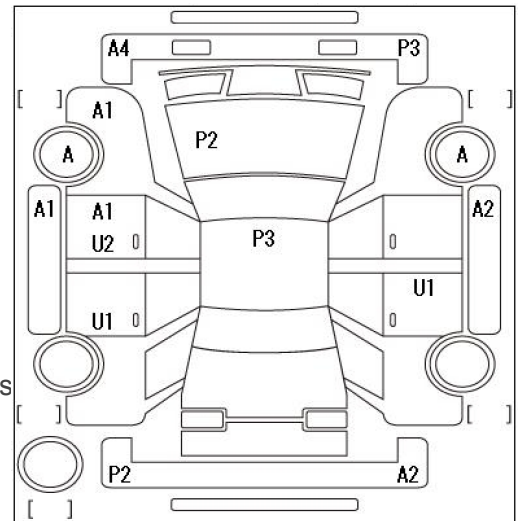
Transmission
F5
Air condition
AAC
Recycling deposit
¥12,470
Registration number
[REDACTED]
Chassis number
[REDACTED]

Sun roof	alloy wheel	power steering	power window
-	-	✓	✓
Leather	TV/Navi	ABS	Airbag
-	-	-	✓
Sales point			
* ADVAN 17" Alloy wheels			
* Floor mats			
* RECARO Sport seats			
* ETC			

## Inspector Report

- Left & Right side wrinkles
- Dirt in the Interior
- Gear Shift knob scratches
- Handle scratches
- Faded Spoiler
- Side end panels U2
- Faded side mirror
- Underbody rust
- Wheel cover A
- Small scratches on exterior
- Additional meter mounting

- G** Stone chip in glass
- A** Scratch or crack
- B** Large Dent
- C** Corrosion
- S** Rust
- U** Dent
- P** Paint damaged marked
- W** Repair History
- X** Part exchange required
- XX** Part exchange history



Length	Width	Height
445	177	145

\*Please proceed to the next page to see the full auction list explanation.

## CONDITION SHEET EXPLANATION

<b>A1</b> Small Scratch	<b>S1</b> Rust
<b>A2</b> Scratch	<b>S2</b> Heavy Rust
<b>A3</b> Big Scratch	<b>U1</b> Small Dent
<b>B</b> Dent with scratch	<b>U2</b> Dent
<b>B1</b> Distortion on (radiator) core support or back panel (approximately size of a thumb)	<b>U3</b> Big Dent
<b>B2</b> Big Distortion on (radiator) core support or back panel	<b>Y1</b> Small Hole or Crack
<b>B1-B4</b> Large dents	<b>Y2</b> Hole or Crack
<b>C1</b> Corrosion	<b>Y3</b> Big Hole or Crack
<b>C2</b> Heavy Corrosion	<b>X1</b> Small Crack on Windshield (approximately 1cm)
<b>AU2</b> Dent and Scratch ( Medium).	<b>R</b> Repaired Crack on Windshield
<b>E1</b> Few Dimples	<b>RX</b> Repaired Crack on Windshield (needs to be replaced)
<b>E2</b> Several Dimples	<b>X</b> Needs to be replaced or crack on glass
<b>E3</b> Many Dimples	<b>XX</b> Replaced
<b>G</b> Stone chip in glass	<b>W1</b> Repair Mark/Wave (hardly detectable)
<b>H</b> Paint faded or (Thumb size hole from rust, corrosion or rotting)	<b>W2</b> Repair Mark/Wave
<b>P</b> Paint damaged marked	<b>W3</b> Obvious Repair Mark/Wave (needs to be repainted)

## AUCTION GRADE EXPLANATION

<b>6 / S</b> New car	<b>0</b> Repaired
<b>5</b> Used but appears as new	<b>R</b> Repaired (History of being repaired, parts replaced, no quality guarantee, buy at your risk, could be big damages, frame bent possibility.)
<b>4.5</b> Very clean with only minor pin dents & scratches	<b>RA</b> Accident repaired, been in crash, parts replaced, generally small damages.
<b>4</b> Good condition with normal wear & tear	<b>***</b> Ungraded (existing fault / damage)
<b>3.5</b> Numerous condition faults / possible minor repair	<b>A - D</b> Body / interior condition ( <b>A – as new</b> , <b>B – very clean</b> , <b>C – average</b> , <b>D – poor</b> )
<b>3</b> Poor condition / noticeable dents & damage / rust / past repair	<b>E –</b> The car is in bad shape. Rust, corrosion and exterior breakdowns are plenty.
<b>2</b> Very poor condition / water damaged	
<b>1</b> Modified (usually performance parts)	



\*\* Verified Photos



\*\* Verified Photos

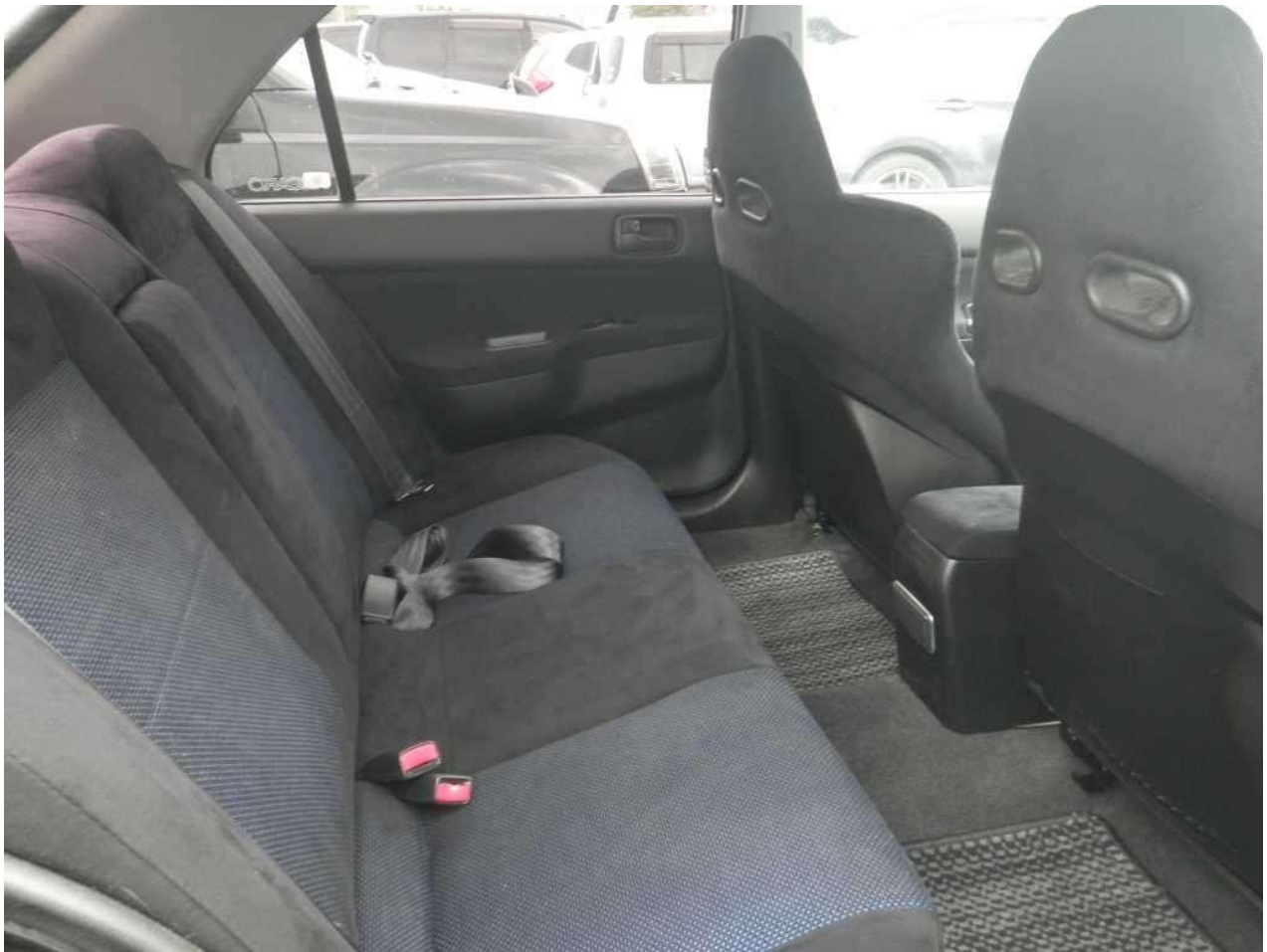


\*\* Verified Photos





\*\* Verified Photos



\*\* Verified Photos

## GLOSSARY

**1 Chassis number:** a unique identification number of the vehicle in Japan (same as VIN in the USA or Europe)

**2 Safety grade:** Determining the overall collision safety performance evaluation – For the driver's seat, the results of the full-wrap frontal collision test, offset frontal collision test, and side collision test are added together and evaluated to 6 different levels. For the Frontal passenger's seat, the results of the full-wrap frontal collision test and the side collision test (results for the driver's or the front passenger's seat are used) are added together and evaluated to 6 different levels.

**3 Title information:**

Registered – qualified for driving in Japan

Deregistered Temporarily – not qualified for driving in Japan, usually a temporary title during the ownership change

Deregistered Completely – not qualified for driving in Japan, the vehicle is determined to be scrapped

Deregistered to Export – not qualified for driving in Japan , the vehicle is determined to be exported

**4 Use in the contaminated regions:** The Fukushima Daiichi nuclear disaster was a catastrophic failure at the Fukushima I Nuclear Power Plant on 11 March 2011, resulting in a meltdown of three of the plant's six nuclear reactors. As a result, some areas in the following prefectures were contaminated: Fukushima, Miyagi, Ibaraki, Tochigi.

**5 Radioactive contamination test:** radioactive contamination inspection that was started in July 2011 as a preventive measure for exporting contaminated vehicles from Japan. The inspection is being conducted since in all sea ports of Japan under the supervision of The Japan Harbor Transportation Association (JHTA).

MLIT – Ministry of Land, Infrastructure, Transport and Tourism.

AUTOCHECK.JP DEPENDS ON ITS SOURCES FOR THE ACCURACY AND RELIABILITY OF ITS INFORMATION. THEREFORE, NO RESPONSIBILITY IS ASSUMED BY AUTOCHECK.JP OR ITS AGENTS FOR ERRORS OR OMISSIONS IN THIS REPORT. AUTOCHECK.JP FURTHER EXPRESSLY DISCLAIMS ALL WARRANTIES, EXPRESS OR IMPLIED, INCLUDING ANY IMPLIED WARRANTIES OF MERCHANTABILITY OR FITNESS FOR A PARTICULAR PURPOSE.